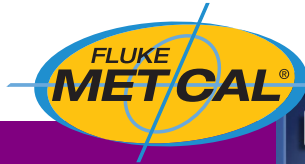


MET/CAL® Plus

Calibration Management Software

Version 7.3

Technical Data



Support for the new modern Windows® platforms, latest version of Crystal Reports, broader instrument support, and more

In this latest release of Fluke MET/CAL Plus Calibration Management Software, the Sybase SQL Anywhere database has been upgraded to version 11, enabling MET/CAL calibration software to support the Microsoft Windows® Vista operating system, Windows 7 operating system and Windows Server 2008, including the 64-bit variants.

Additional new features:

- Broader instrument support
- Crystal Reports 2008
- Improvements to MET/TRACK® Asset Management Software
- ...and more

Get more information about MET/CAL® Plus software

This data sheet is presented as a companion to the MET/CAL Plus Version 7.1 data sheet (literature code 1627836) and the MET/CAL 7.2 data sheet (literature code 2746613). It includes information about features in new version 7.3. For complete MET/CAL Plus software information, please refer to the version 7.1 data sheet. You can also find complete product information on www.fluke.com/metcal.

Broader instrument support



MET/CAL Plus 7.3 adds support for the Fluke 6105A/6100B Electrical Power Standards, the 5080A Multi-Product Calibrator, and more.



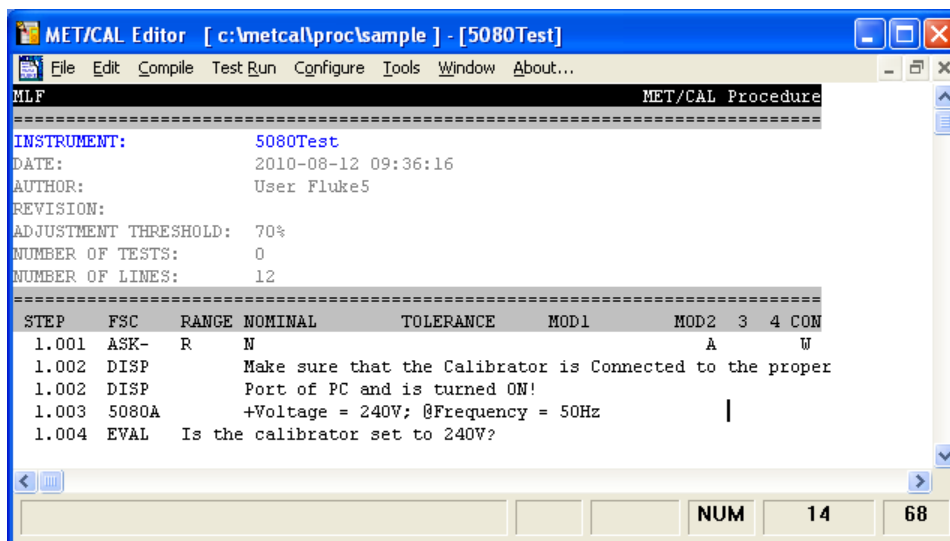
Version 7.3 allows MET/CAL Plus to address an expanded workload that includes the newest Fluke products. New Function Select Codes (FSCs) are now available to support these instruments:

- Fluke 6105A Electrical Power Standard
- Fluke 6100B Electrical Power Standard
- Fluke 6100A/6100B/6105A Energy Counting Option
- Fluke 5080A Multi-Product Calibrator
- Clarke-Hess 8100 Transconductance Amplifier
- Agilent Economy Spectrum Analyzer (ESA) Series

Crystal Reports 2008

Crystal Reports, the reporting tool supplied with MET/CAL Plus software, has been upgraded to the newest version. Crystal Reports 2008 is a powerful reporting tool that helps you design and deliver reports via the Internet or embedded in enterprise applications. Benefits include:

- Improved report designer that enables you to create professional-looking interactive reports that integrate Flash, cross-tabs, customized pages sizes, and more
- Built-in barcode support lets you create barcodes easily—no coding required
- Faster runtime access saves time
- Multilingual reporting
- ...and much more

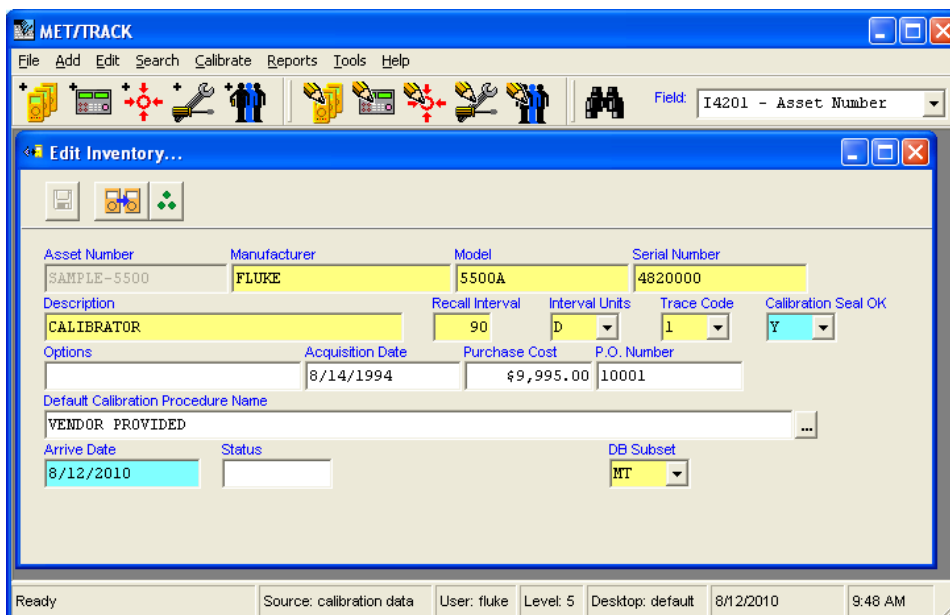


Test procedure that accesses the Fluke 5080A FSC.

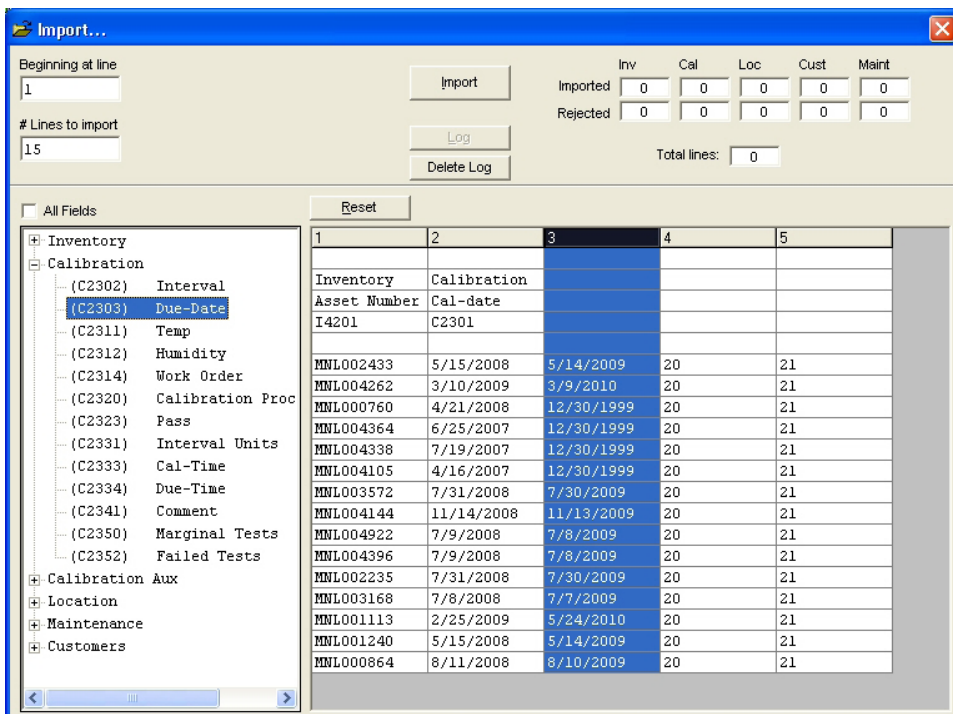
MET/TRACK® Asset Management Software improvements

MET/TRACK is a powerful calibration asset management system for test and measurement that provides asset management for MET/CAL Plus software. MET/CAL Plus Version 7.3 includes several improvements to the MET/TRACK application, including:

- Support for Windows XP, Vista, 7, 2003 and 2008, including 32-bit and 64-bit platforms
- Updated, simplified installer: when you want to upgrade, your IT organization can now do MSI installations on client workstations. As a user, you get more flexibility and control on data locations.



MET/TRACK Inventory Editor.



MET/TRACK import tool.

Other MET/CAL Plus v7.3 enhancements

- DISP FSC truncates messages instead of generating an error when a procedure is running. If the maximum 56-character line length is exceeded, the line is truncated to 56 characters and "... " is appended to indicate that there are more characters that are not displayed.
- Run long single procedures with more than 999 tests
- IFILE MATH FSC function returns the DOS 8.3 path format, to support paths with spaces and the existing utility executables, making it easier to run legacy applications.
- Access an accuracy file for a system instrument configured as an auxiliary device separately from the accuracy file of the primary device.
- Improved database read/write access time from MET/CAL Runtime
- Support for 57600, 230400, 256000 RS 232 baud rates
- Installation supports the Windows Standard directory structure.
- PIC and PICE FSC statements support beeping if beeping is turned on.
- A new import tool that makes it easier than ever to import data into MET/TRACK software
- Users can now open and make changes to multiple forms at the same time allowing the user to save changes to each form.
- Search large databases faster. MET/TRACK limits search results to 500 records at a time when browsing for assets from the main toolbar.
- New, improved online help that enables you to view help files from within MET/TRACK
- More flexible linked validation
- Automatic updates to "Instrument Browser..." window following record changes
- Improved login performance on large remote databases—faster initial load times and visual feedback via progress bar

Get MET/CAL V7.3 and more at no cost: become a member of MET/SUPPORT Gold

MET/SUPPORT Gold is an annual membership program offering premium support and services to help you stay as productive as possible. MET/SUPPORT Gold services include:

- Priority access to the technical support team
- Free software updates and upgrades
- 20 % discount on calibration software training

- Free access to the Warranted Procedures library
- 20% discount on custom procedure development
- Database repair services
- Lost password recovery
- Bi-monthly FAQs web seminars

Use only a few of the Gold services and you can easily recover more than the cost of your membership fee in just a few months.

Ordering information

Models

MET/BASE-7 Calibration Software Database System. One or more MET/CAL, 5500/CAL and/or MET/TRACK license disks required for use.

MET/CAL-L License disk for MET/CAL. Includes capabilities of 5500/CAL and MET/TRACK. MET/BASE 7 or earlier version required.

5500/CAL-L License disk for 5500/CAL. Includes capabilities of MET/TRACK. MET/BASE 7 or earlier version required.

MET/TRACK-L License disk for MET/TRACK metrology property management software. MET/BASE 7 or earlier version required.

MET/BASE-7U MET/BASE Upgrade. Upgrades MET/BASE from version 5.0 or later to current version. Upgrade licenses are also required for systems running MET/BASE older than version 7.0.

MET/CAL-LU License disk upgrade. MET/BASE 7 and serial number for prior version (5 or newer) of MET/CAL required.

5500/CAL-LU License disk upgrade. MET/BASE 7 and serial number for prior version (5 or newer) of 5500/CAL required.

MET/TRACK-LU License disk upgrade. MET/BASE 7 and serial number for prior version (5 or newer) of MET/TRACK required.

Additional products from the Fluke Calibration Software suite

COMPASS® for Pressure Pressure Calibration Management Software

MET/TEMP II Temperature Calibration Software
Manual MET/CAL® Calibration Management Software

COMPASS® for Flow Flow Calibration Management Software

Scheduled training

Various courses available

MET/SUPPORTSM GOLD

Priority support agreement for one workstation. For additional workstations contact your local Fluke Calibration sales representative.

Total solutions in calibration

Fluke Calibration provides the broadest range of calibrators and standards, software, service, support and training in electrical, temperature, pressure, RF and flow calibration.

Visit www.fluke.com/FlukeCal for more information about Fluke Calibration solutions.

- Electrical
- RF
- Temperature
- Pressure
- Flow
- ▶ Software

Fluke Calibration.

Precision, performance, confidence.™

Fluke Calibration
 PO Box 9090, Everett, WA 98206 U.S.A.

Fluke Europe B.V.
 PO Box 1186, 5602 BD
 Eindhoven, The Netherlands

For more information call:
 In the U.S.A. (800) 443-5853 or
 Fax (425) 446-5116
 In Europe/M-East/Africa +31 (0) 40 2675 200 or
 Fax +31 (0) 40 2675 222
 In Canada (800)-36-FLUKE or
 Fax (905) 890-6866
 From other countries +1 (425) 446-5500 or
 Fax +1 (425) 446-5116
 Web access: <http://www.fluke.com>

©2010 Fluke Corporation. Specifications subject to change without notice. MET/CAL, MET/TRACK and COMPASS are registered trademarks of Fluke Corporation. Windows is a registered trademark of Microsoft Corporation. Printed in U.S.A. 8/2010 3808820A D-EN-N

Modification of this document is not permitted without written permission from Fluke Corporation.

Pub-ID: 11666-eng